

SAFETY
ENGINEERING
FOR A SAFE
WORK



Safeway360

360.

**Product
Presentation**
**Anti-slip
protection**

Safeway 360

We offer you the global advanced security service to **protect the people on your team work, the work areas and the material goods.**

We are committed to supporting you and to offer you the most professional and appropriate services, fast and reliable.



STUDY & PROJECT



PRODUCT & INSTALLATION



AFTER SALES & MAINTENANCE

We take care of solving **all the project stages**: from the detection of the needed solution, to the maintenance of the facilities.



GLOBAL SAFETY

Outdoor & Indoor

People protections



Asset and property protections



Temporary and final signs



Delimitation of work areas



Customized design & solutions

SAFETY ENGINEERING
FOR A SAFE WORK



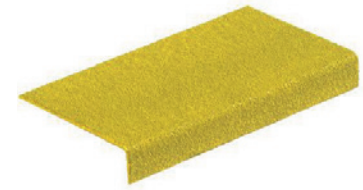


Vigil Deck Mark

The range of Vigil Anti Slip products are considered as the best available product in the market for long term anti-slip protection. It finds its applications in the demanding situations in:

- Offshore
- Mining
- Shipping and dredging
- Chemical Industries
- Fishing industry
- Food industry
- In all other demanding situations

The products are renowned for the resistance to chemicals and other solutions.





Prevention of Slips, Trips & Falls

Statistics - Falls from heights and Slips & Trips

A "fall from height" is a common cause of injury at workplaces. This is not only associated with personal suffering but also with high costs. In the industry, a fall from a roof, platform or (open) floor, a fall from a ladder or stairs and/or a fall from scaffolding is common.

Annually, more than 200,000 workers in NL have an accident at work, which means, based on 29%, more than 58,000 people fall from a height during their work each year.

Vigil Antislip will help to prevent slips and falls!



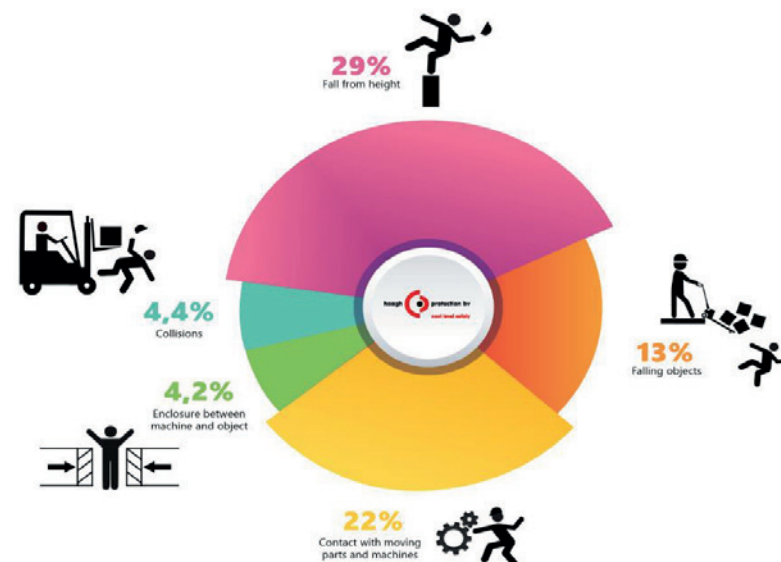
WALKWAY AND RAMP SAFETY



STAIRWAY SAFETY



LADDER SAFETY





Prevention of Slips, Trips & Falls

Obstacles to improvement for safe working include:

- People believe the risks are NOT serious enough
- Little understanding of the many cause
- Thinking that slips/trips/falls are inevitable
- Poor risk assessment and management controls including lack of follow up and monitoring
- Associated cost factor of implementation and/or changes





Key Assessment Criteria

Uniformity of Design:

All surfaces being used and walked on - stairs, ladders, walkways, platforms should be of uniform non-slip material for confident, no-risk usage.

Co-Efficient of Friction:

All surfaces to be rendered non-slip and used daily and regularly by employees. Should have a minimum DIN 51130- rating of R12 and an ASTM DAS18 of at least 0.49 when oiled.

Wearability/Longevity:

The criteria for this is the ability of the surface to resist wear and not require frequent replacement before ten years of normal use.

Visibility:

This is the ability of the surface or tread materials to be easily noticed at any level, height, angle or direction to be well recognised. (we prefer yellow)



Typical Solution

Paint/Sand Combination:

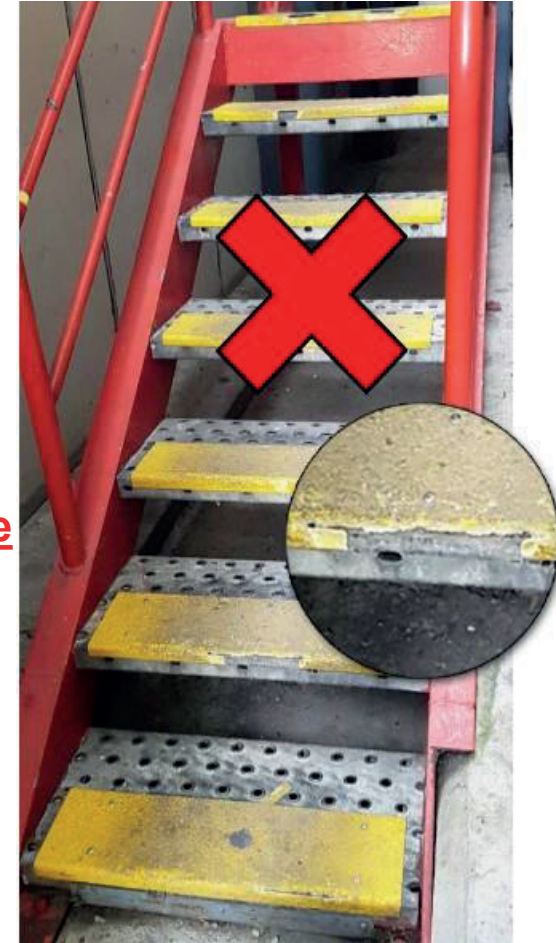
- Low initial cost but cannot be applied to grating.
- Down time during curing.
- Short term non-slip solution, due to delamination.
- High replacement costs, uniformity not achieved.
- Life span 1 - 12 months, mostly due to delamination.

DOES NOT ACHIEVE ALL GOALS.

G.R.P. (Glass Reinforced Plastics)/F.R.P (Fibre Reinforced Plastics) Abrasive Products:

- Medium initial costs.
- Short term non-slip solution.
- Uniformity achieved,
- medium replacement cost.
- Life span of 2 - 5 years, mostly due to cracking and premature wear.

DOES NOT ACHIEVE ALL GOALS.





Typical Solution

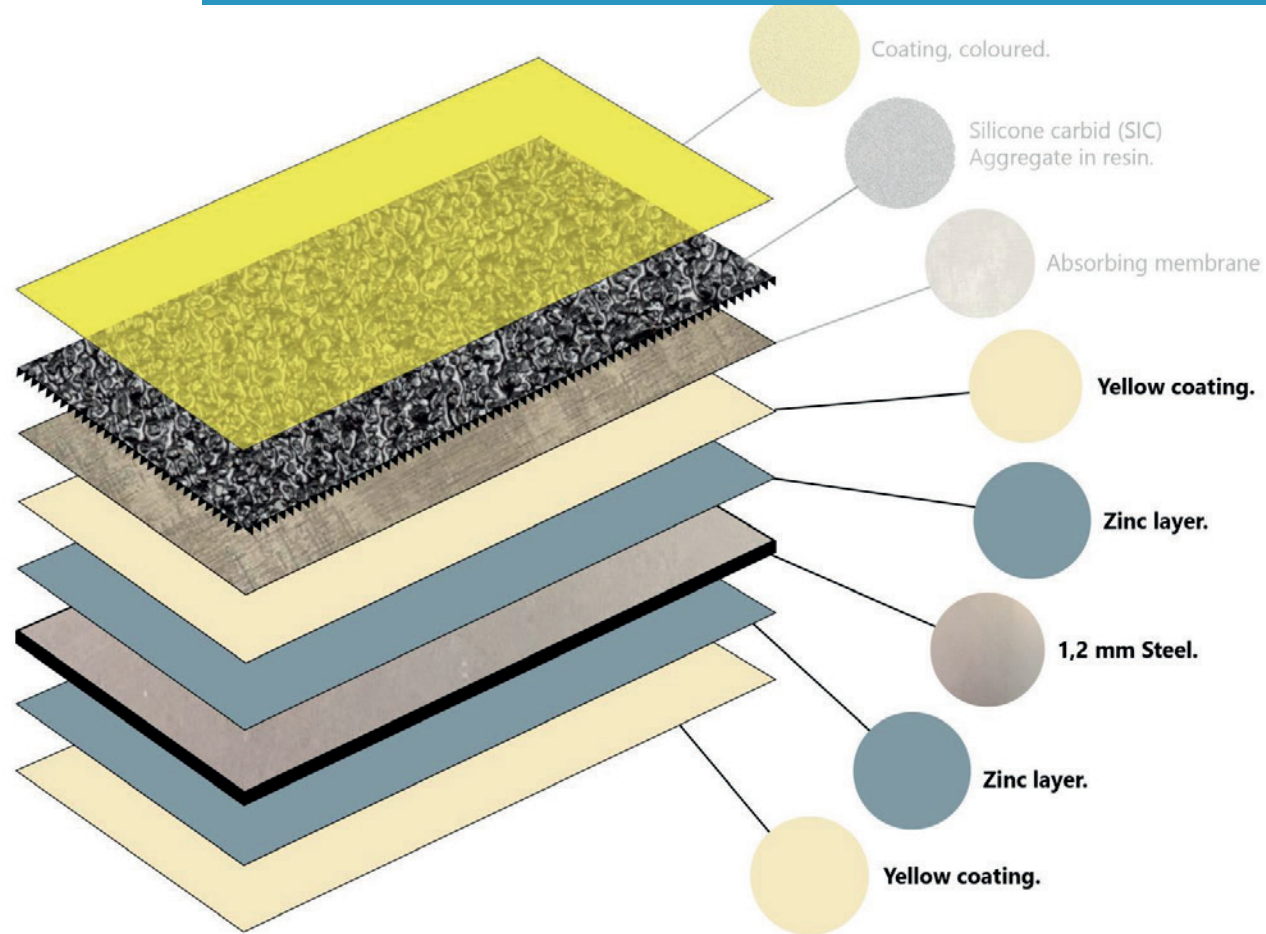
- Quality proven products
- Long term non slip solutions
- Uniformity achieved
- No replacement costs
- Does not delaminate, wear or crack
- Made to size possibilities
- Life span 10 - 25 years



ACHIEVES ALL GOALS



Layers

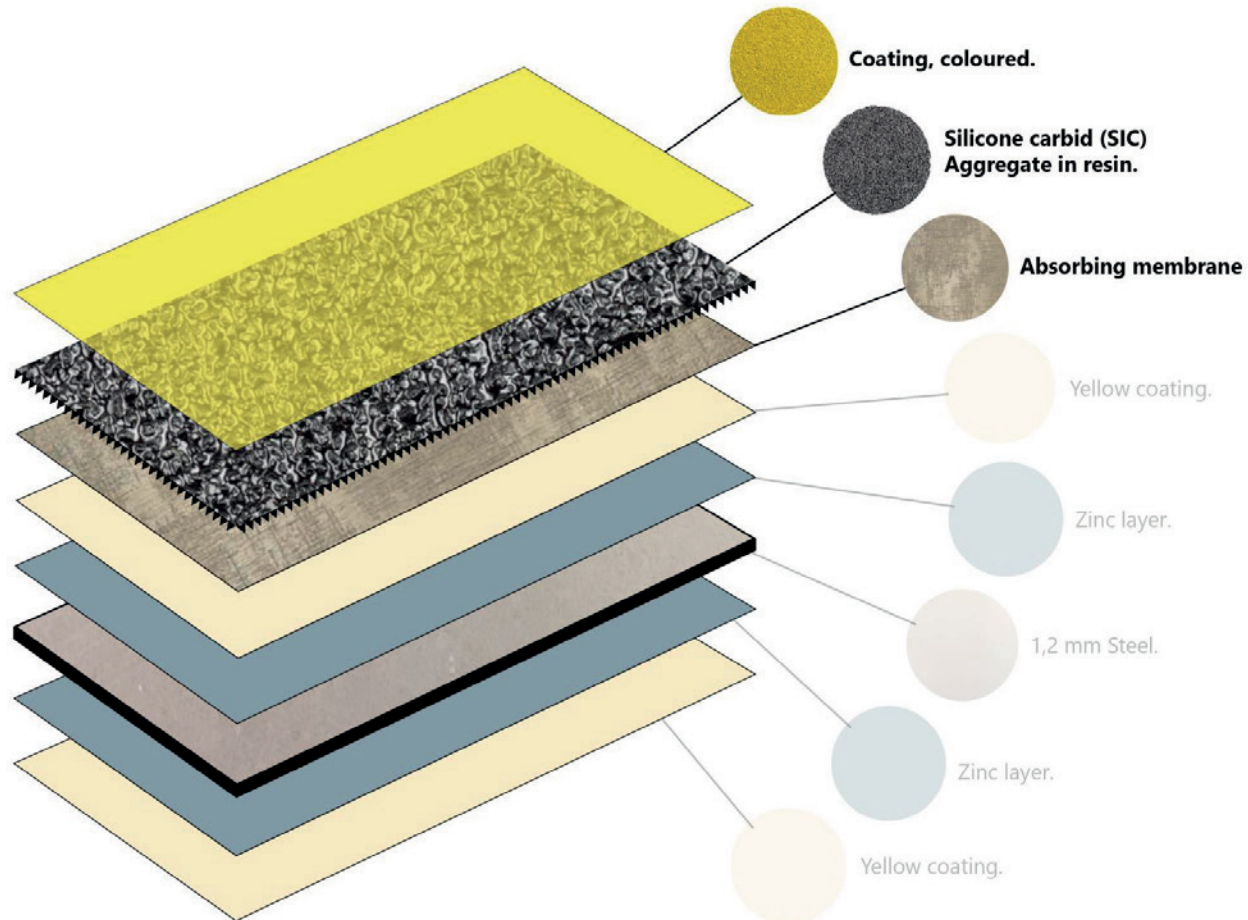


The basis of each Vigil element is a Colorbond or Stainless steel sheet in a thickness of 1.2 mm.

The thin structure significantly reduces the risk of stumbling and, when applied to stairs the risk of heels hooking on the stairnosing.



Layers



ABSORBING MEMBRANE

Variations in temperature make every product expand or shrink. Every material has a different expansion coefficient.

The absorbing membrane absorbs the differences in expansion and shrinking of the various layers. The product will not delaminate due to this and withstands temperatures from -30° to $+60^{\circ}$ C.

SIC AGREGATE

For the anti-slip properties SIC or silicone carbide is used. It is the hardest and sharpest aggregate available in bulk quantities. Its hardness of $2,480\text{kg}/\text{mm}^2$ far exceeds that of silica, quartz or aluminium oxide.

It is available in several grades.



Available in 3 Grades



OFFSHORE



INDUSTRIAL



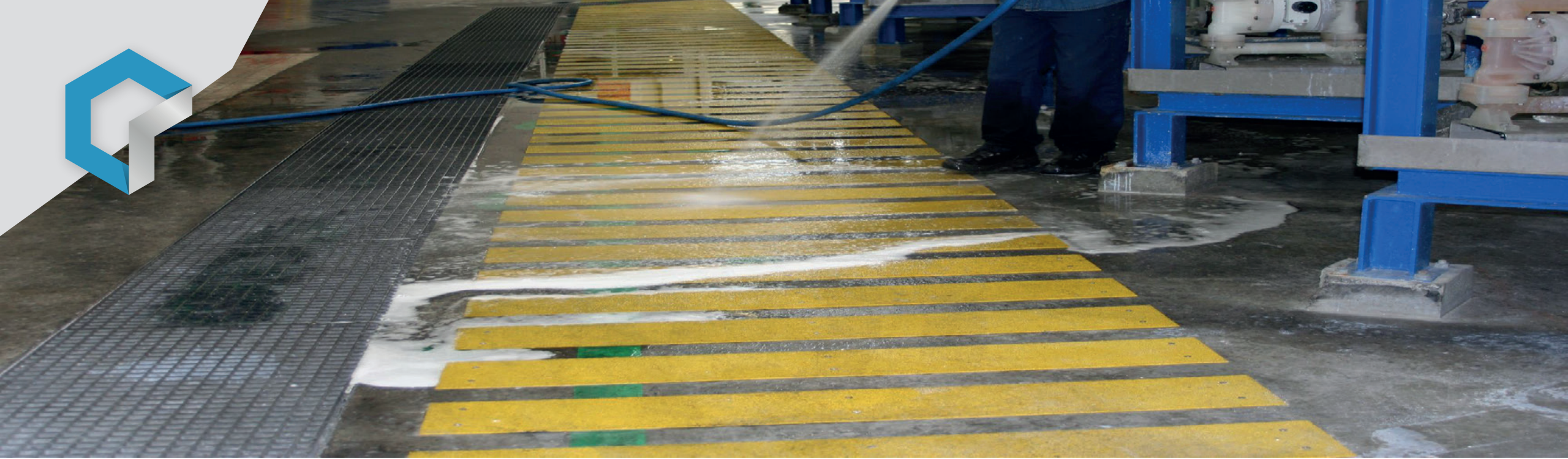
COMMERCIAL

- Offshore grade:
Application in polluted and dirty areas such as offshore or refineries, etc.
Can handle lots of dirt before cleaning is necessary.
- Industrial grade:
Application in medium polluted areas such as the mining or manufacturing industries, etc.
When polluted cleaning with high pressure syringe.
- Commercial grade:
Application in slippery less polluted areas such as commercial environments. When polluted cleaning for instance with high pressure syringe.



Industrial Applications





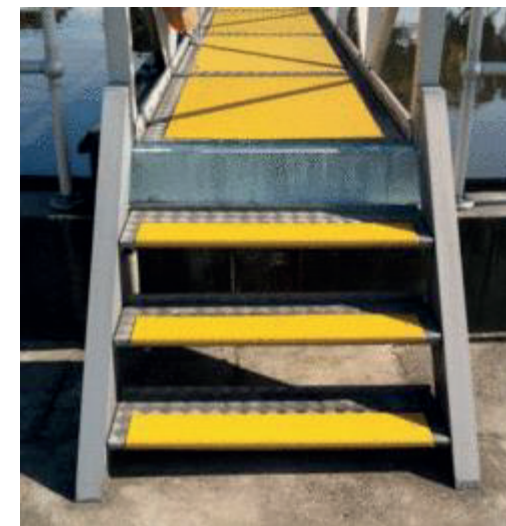
It can be cleaned with hot water and high-pressure syringe.



STAIRNOSINGS

SAFETY WITHOUT A COMPROMISE:

- High visibility.
- Does not wear, especially important at the vulnerable front- edge of the stairnosings.
- Available in several grades, to adapt to level of pollution.
- Chemical resistant.



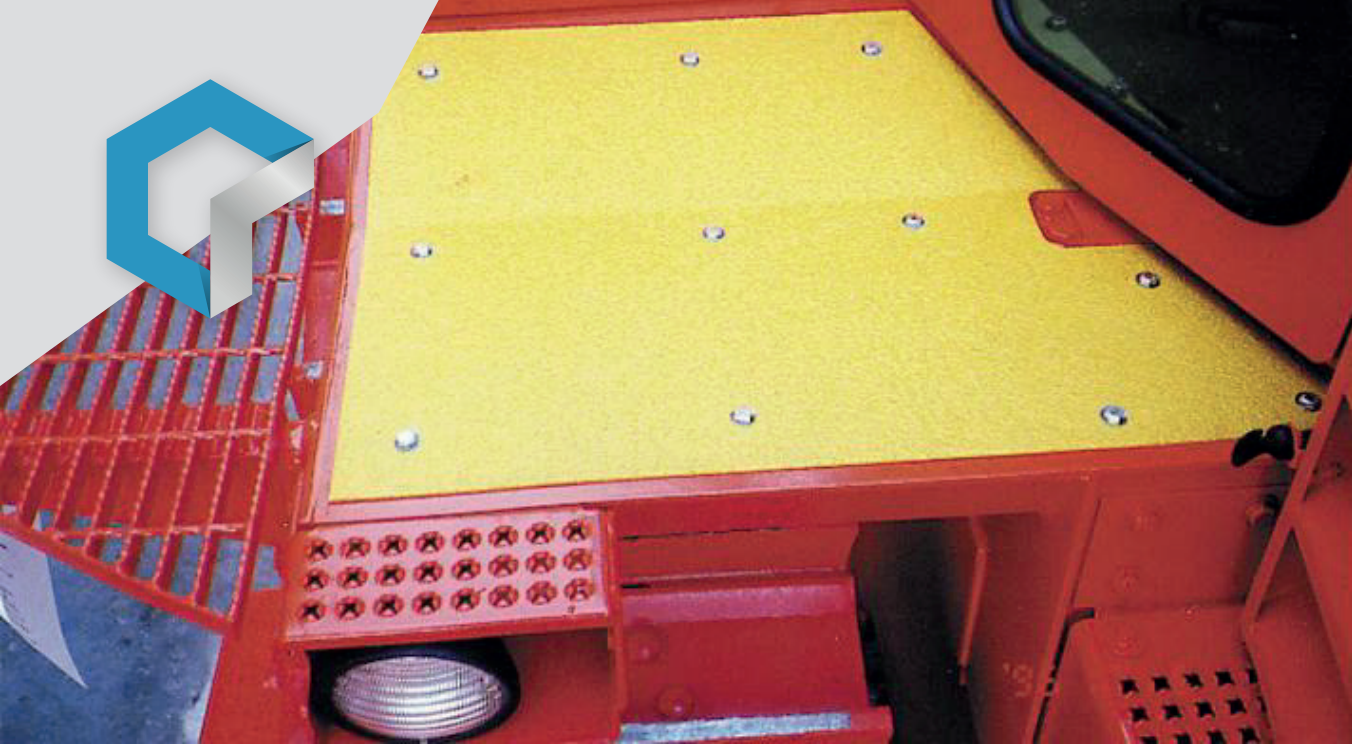


LADDER RUNG COVERS

- Available in rectangular (U) shape, chevron (V) shape and round shape.
- Available in various diameters.
- Available in range of standard widths.
- Yellow color for good visibility.
- Easy top assemble with either Sikaflex glue or with rivets.

The elements are standard made in Lt. industrial anti-slip grade to guarantee excellent anti-slip properties but in a way that they do not cause harm to hands when climbing.



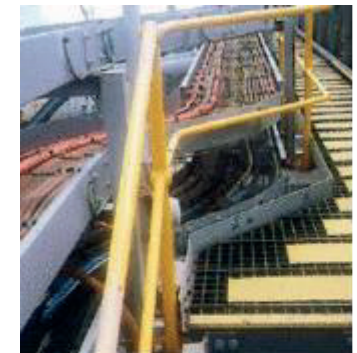


METAL DECK

When new checker plates or steel gratings they offer a reasonable level of anti-slip protection, frequent use however polishes the surface and thus creates a dangerous slippery surface.

By equipping gangways, made from the above materials, with Vigil anti-slip elements with intervals of 150 mm a very safe passage can be created as by walking on it either the toe or the heel will touch the Vigil element.

Gratings fit with Vigil than still will allow moisture and dust to pass through.





VINYL DECK

The flexible and easy to apply* vinyl deck is ideal for application on bended surfaces. When properly applied Vigil Vinyl Deck does not lose its anti-slip properties, will not break, nor delaminate.

The product finds its application in wet-zones, canteens and even in heavy industries.

* to be glued over the full surface on a properly cleaned foundation.

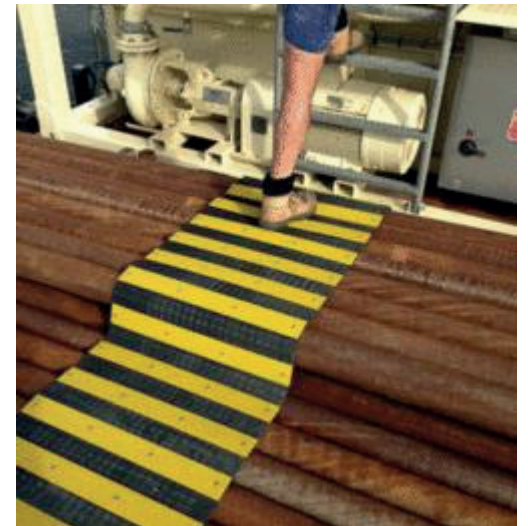




FLEX DECK

Uneven surfaces can be potential deadly and demand a special anti slip solution. With flex deck an anti slip solution can be created with excellent visibility that adapts itself to almost every basis.

Can be rolled up and removed after use.





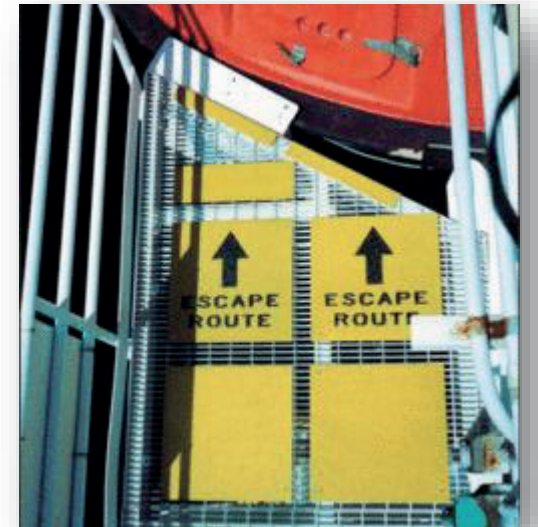
EVACUATION & MARKING

Vigil Antislip developed a range of products with which workers are pointed in the right direction and help create safe escape routes:

- Deck Mark: Vigil elements with signs like 'Escape Route' made to size.
- Deck Light: Vigil elements with a photoluminescent surface.

These products offer the same characteristics like all other Vigil products:

- superior slip resistance, long lifespan,- high resistance against liquids etc. etc.

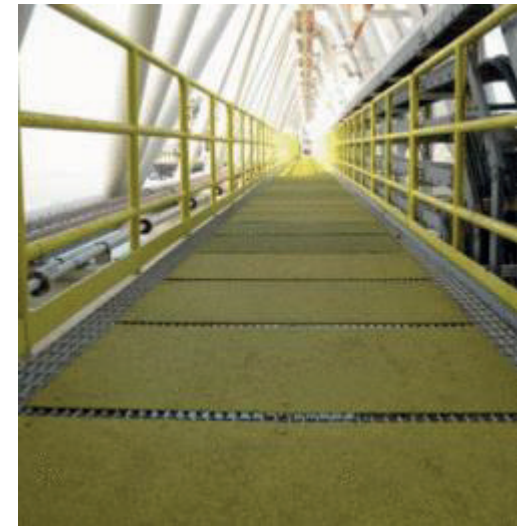


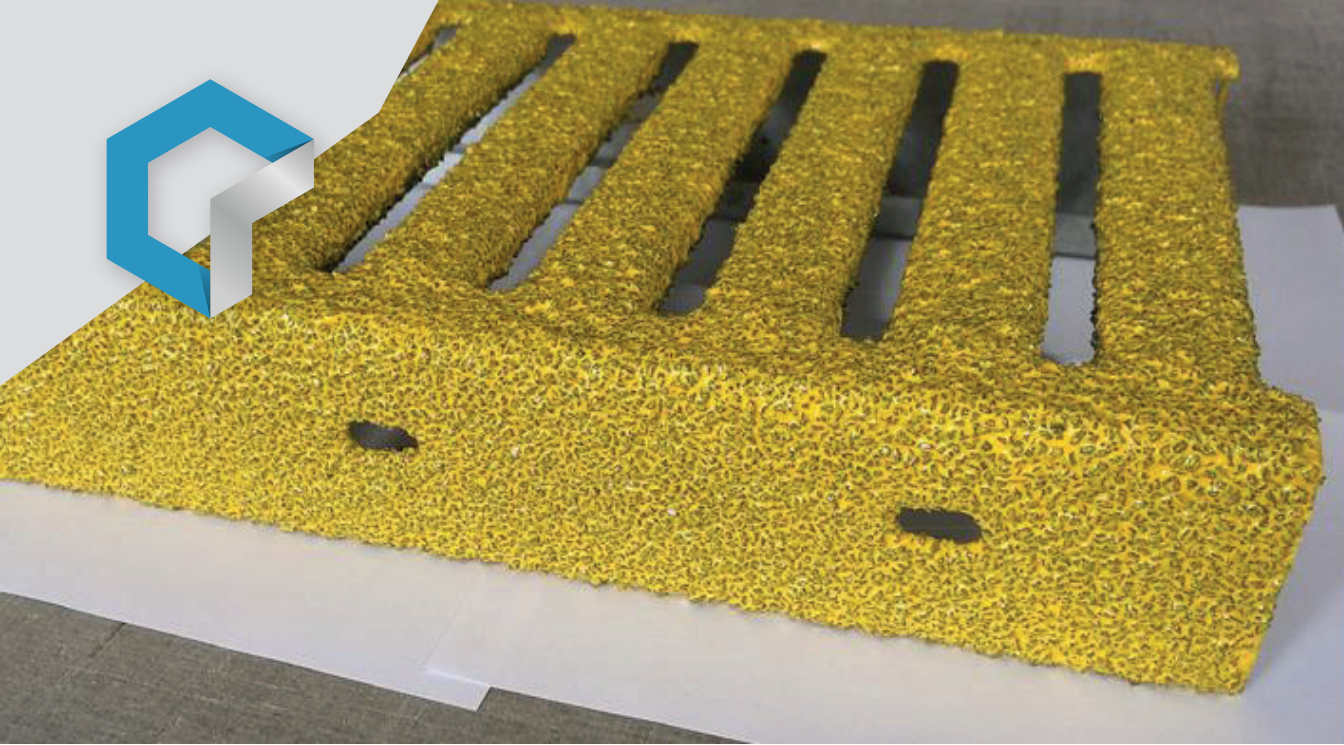


GANGWAYS & AISLES

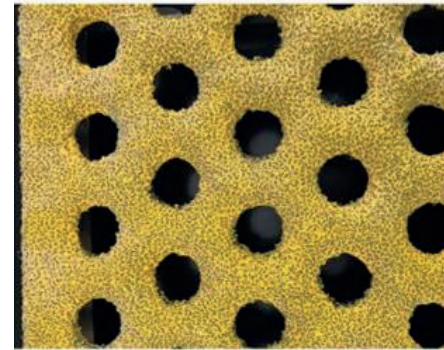
All gangways or aisles in areas polluted with liquids, solvents, dust etc. have an increased risk to become slippery and deserve the best possible anti-slip solution. Typical risky situations can be found in numerous industries like:

- Chemical Industries,
- Off Shore operations,
- Food and drink processing industries,
- Mining,
- Shipping and Shipbuilding,
- Breweries,
- Automobile industries and garages,
- Dredging.

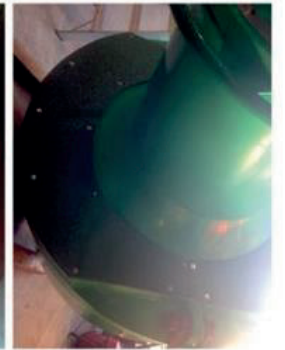
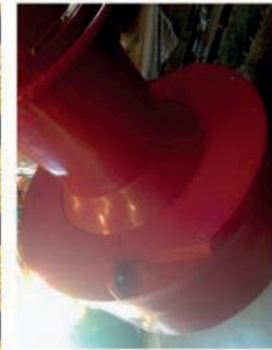




CUSTOM MADE SOLUTIONS



Perforated Grating

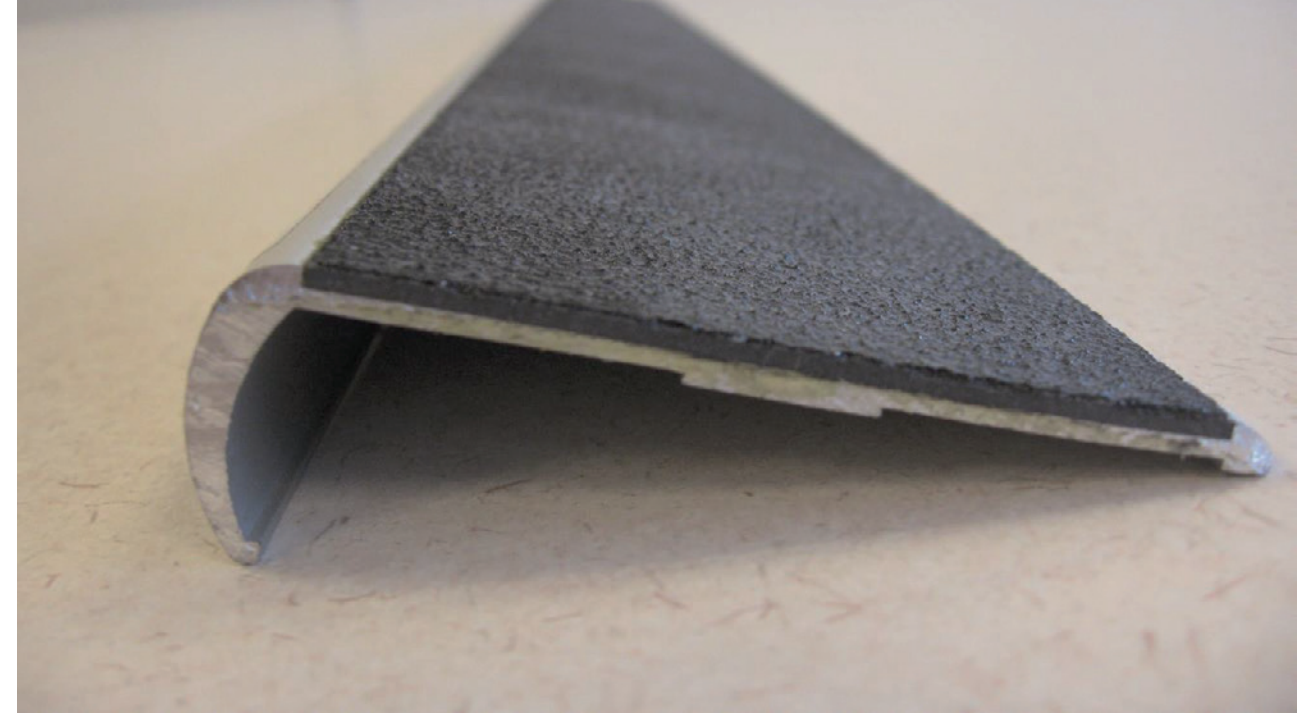


Antislip Rims on Marine Marker Buoys



Commercial Applications





ALU-STAIRTREADS

Safety on stairs

Reduces the risk of a fall to a minimum and is still a good decorative product.

Strong durable and UV-stable.

Ideal for redecorating used stairs that are polished by frequent use or that are damaged.

- Ideal both for inside and outside use.
- Available in a wide range of colors.
- Based on an extruded aluminum profile in silver and anodized brass color.
- Easy to install with special developed Sikaflex glue
- Comes in strips of max 6 meter and is easy to cut to the required length.



VINYL DECK

Vigil Antislip Vinyl Deck is developed in order to eliminate the risk of injuries. In the mean time it improves the workflow as it is an essential element in the floor covering of wet area in commercial buildings. Typical areas of application are: kitchens, canteens, cloakrooms, etc.

Vinyl Deck is available in a huge range of colors. The product does not discolor, tear*, or delaminate. The product is easy to install with full-surface-glue on all kinds of surfaces, it adjusts itself to irregularities and curved surfaces. Before fixing it is easy to cut into the required shape. Also available in Luminiscent (glow in the dark) version.

* If well installed with full-surface-glue.



Why the Anti-Slip Solution

WARRANTY NO:
CUSTOMER:
ORDER NO:
DATE:

WARRANTY

Prism Pty Ltd (A.B.N.: 54 009 342 910) warrants all Class One Quality Vigil Antislip products purchased on the above Order Number and date, for a period of Ten (10) years from the date of invoice.

It is warranted that all materials and workmanship utilised in the manufacture of Class One Quality Vigil Antislip products are of the highest quality and further more that these products will be:

- Resistant to wear under normal use and conditions.
- Resistant to degradation from surface exposure to solvents.
- Resistant to corrosion provided that Colorbond Steel - backed products are not installed in salt / acidic splash zones
- Resistant to delamination through thermal expansion inequities.
- Resistant to delamination through impact except for the immediate impact zone.

If the Vigil Antislip products fail to comply with the Warranty, Prism Pty Ltd shall replace such products at no cost to the Distributor or Customer within a period of 4 weeks after official notification.

Prism Pty Ltd assumes no liability for damage to Vigil Antislip products caused by improper treatment or if the product has been subject to abuse or incorrect installation.

Only original Warranty Certificates can be used for claim purposes.

S.R. McCorkill
Managing Director

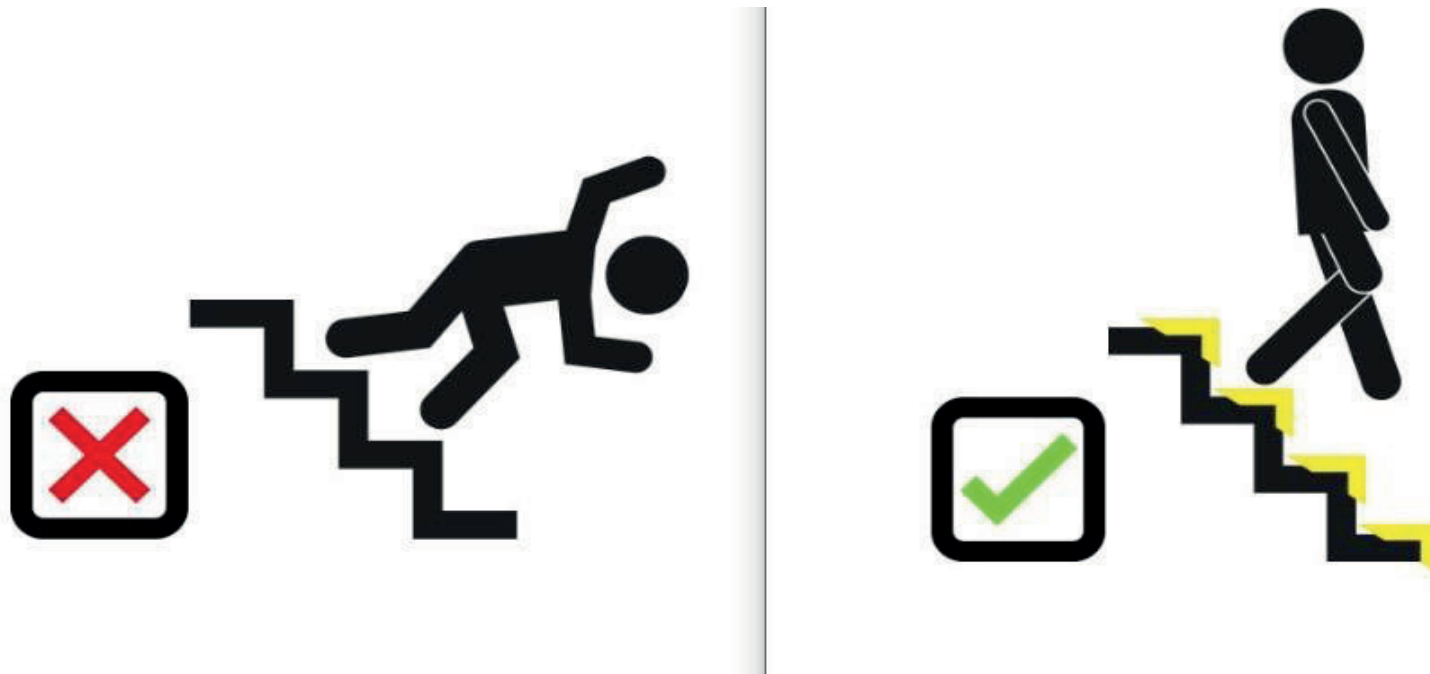
Mark Smith
Production Manager

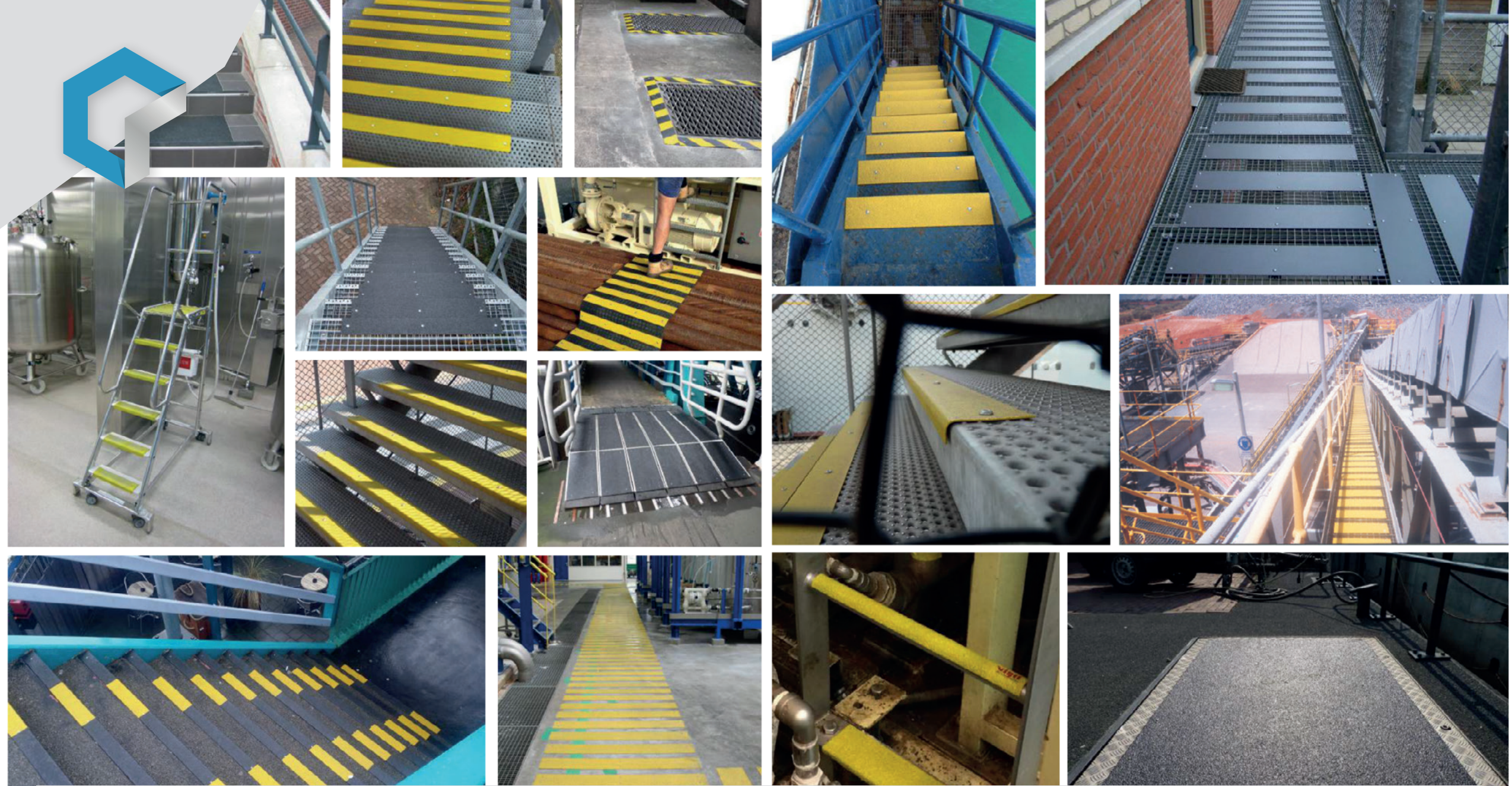
- Vigil Anti-slip was founded in 1989 / Haagh Protection in 1981
- Stability of ownership & accessibility
- **10 YEAR REPLACEMENT WARRANTY**
- Quality products & materials used during production process
- Reduced costs due to superior quality and non-replacement of inferior products
- Multiple industries and applications
- Delivery from stock
- Market Leader with commitment to Quality
- Peace of mind



Why the Anti-Slip Solution

Vigil does not pretend to be the cheapest product on the moment of ordering but consider the total cost of ownership!







International Brands Food-Industry

Mc Cain Foods	Daimler-Benz AG
Bayer Chemicals	Goodyear
Landrover	Hewlett Packard
DAF Trucks	Vista Print
TATA Steel	Johnsen & Johnsen
Nedschroef	Kelloggs (Pringles)
Lamb Weston	Langnese Iglo
Griffith Foods	Nestle
Friesland Campina	Danone
Bunge Loders Crocklaan	Siemens AG
Puratos NV	Thyssen krupp AG
Persoon BV	Volkswagen
CRH Group	P.T. Krakatau Steel
ST Microelectronics	Samsung heavy Industries
Galloo NV	Coca Cola Amatil
Iemants NV	Malta Diary
Ardagh Group	Foster Clark
Dycore	Swan Breweries
Toyota Belgium	Cargill
Volvo	Alcoa
Hamal Signature	Mitsubishi
Owens Corning	Coroos Conserven
Enexis	Fugro
BASF	ADM Mainz
Caterpillar	Van de Moortele
Bosch	La Venezia

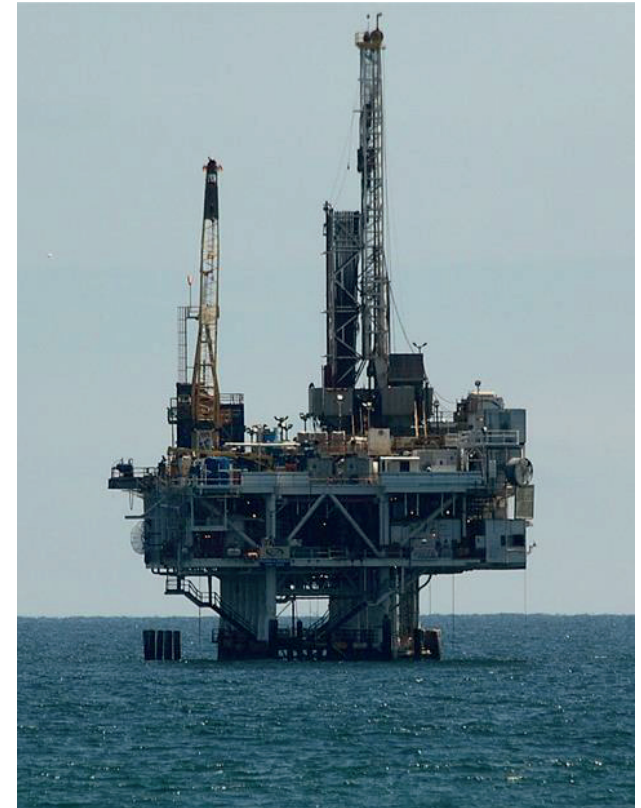




International Brands Oil Production & Offshore

Dredging International
Total Indonesia
Schlumberger Brazil
Petronas Carigali
Shell Petroleum Group
Van Ommeren Terminals
Rijkswaterstaat (Delta-works)
Jan de Nul
BP Exploration
Jack Up Barge
All Seas
Maersk Drilling
Neptune
Qatar Gas
BP Oil
Chevron
Exxon Mobile
TESO
National Oilwell Varco
Brunei Shell Petroleum
DEME
SS Rotterdam
Dana Petroleum
Oiltanking Malta

Caltex
Kuwait drilling
Halliburton
Petro Canada
Diamond Offshore
Mobil North Sea
Sakhalin energy (Russia)
Sekisui SLEC
Eurochem Antwerp
Vopak Terminals
Engie Services

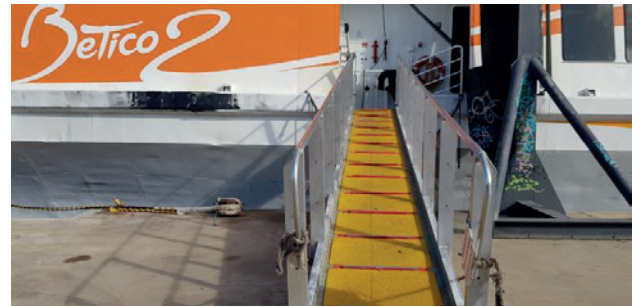




International Brands Transportation · Public · Other

Volkerrail
Stadt hannover
Zoo Duisburg
Stichting AAP
Smithsonian Institue
United Airlains
City op Perth
Brisbane Airport
Bundeswehr
United States Navy
Port of Rotterdam
Melbourne Airport
TNT Transport Group
Red Cross Belgium
City of Amsterdam
Deutsche Bahn
Nederlandse Spoorwegen
London Underground
Volker Rail
Kenbri Firefighting
Tilburg Fire Dept.
ADM Europoort
Rubix Group - Brammer
It'sMe
Mennens
NATO

Western Power
Deutsche Post
Port of Singapore
Rod Laver Arena
Thales Australia
Port of Antwerp
Datwhyler
Kuehne & Nagel



Comprehensive

advance safety service

FOR INDUSTRIAL
WORKFLOWS

Contact

+34 620 526 473

info@safeway360.com

Carrer Aumet, 66

17460 Celrà, Girona



Safeway360

SAFETY
ENGINEERING
FOR A SAFE
WORK



ibnic.

360